

**CERTIFICATION OF
ROBOTIC ARC WELDING
-Operators and Technicians**

Prepared for the
AWS 8th Robotic Arc Welding
Conference & Exhibition

Presented by:
Edward R. Bohnart
Welding Education & Consulting

D16 Committee on Robotics

- *D16.2 Guide for Components of Robotic and Automatic Welding Installations*
- *D16.3 Risk Assessment Guide for Robotic Arc Welding*
- *D16.4 Specification for Qualification of Robotic Arc Welding Personnel*

“Form Must Follow Function”

D16.4 Specification for Qualification of Robotic Arc Welding Personnel

- This Specification sets the requirement for the certification
- D16.4 Describes four levels of qualification which have been handled in QC19 in the following manner:
 - **Level one to be handled by employer and not to be construed as official AWS recognition**
 - **Level two and three have been combined into one certification for the operator**
 - **Level four is the certification for the technician**

FOR OPERATOR CERTIFICATION

- **EXPERIENCE AND EDUCATIONAL REQUIREMENTS**
 - Have minimum 4000 hours welding experience
 - Have good mechanical aptitude
 - Have one year diploma in welding or robotic instruction
 - Have good written and oral communication skills

FOR OPERATOR CERTIFICATION

- **TRAINING RECOMMENDATIONS**

- Completion of original equipment manufacturer or equivalent Robotic Programming course
- Understand the use of the teach pendant
- Have instruction in the proper operation of cross sectioning related tools and hardware such as plasma cutting and band saws
- Have instruction in the applicable destructive testing methods, such as macroetch test or bend test
- Have continuing education in robotic arc welding related disciplines
- Have basic instruction in workings of all of the robotic peripheral equipment
- Have basic instruction covering the safe and proper operation of the robot mechanical arm and control circuitry
- Visual inspection course for the applicable product

FOR TECHNICIAN CERTIFICATION

- **EXPERIENCE AND EDUCATIONAL REQUIREMENTS**
 - Meet all of the level 1, 2, and 3 requirements
 - Have minimum 5 years welding experience with all relevant processes
 - Have a two year Associates Degree in Welding/Robotics/Electrical or equivalent
 - Hold current AWS CWI certification (Certified Welding Inspector).

FOR TECHNICIAN CERTIFICATION

- **TRAINING RECOMMENDATIONS**
 - Meet levels 1, 2, and 3 with the addition of:
 - Receive instruction in the operation of quality measuring tools including applicable computer software for measuring the weld cross section
 - Be familiar with personal computers

AWS QC19 Standard for AWS Certification of Robotic Arc Welding- Operators and Technicians

Certification Sub-Committee

<i>E. R. Bohnart, Chairman</i>	Welding Education and Consulting
<i>J. S. Noruk</i>	Servo Robot Corporation
<i>L. K. Gross</i>	Milwaukee Area Technical College
<i>W. R. Polanin</i>	Illinois Central College
<i>R. F. Noch</i>	Johnson Controls Inc.
<i>V. Mangold, Jr.</i>	ISS
<i>M. P. Vandenberg</i>	Miller Electric
<i>L. Barley</i>	AP Automotive Systems
<i>J. Lisell</i>	Northland Community and Technical College
<i>L. Nielson</i>	ABB

In QC19 The Term Certified Operator Is Much More Than Just A Button Pusher!

“Operator. In the context of an AWS Certified Robotic Arc Welding-Operator it is a person capable of dealing with all aspects of an arc welding robot cell. These aspects are as detailed in the D 16.4 qualifications for a level 2 and 3 person.”

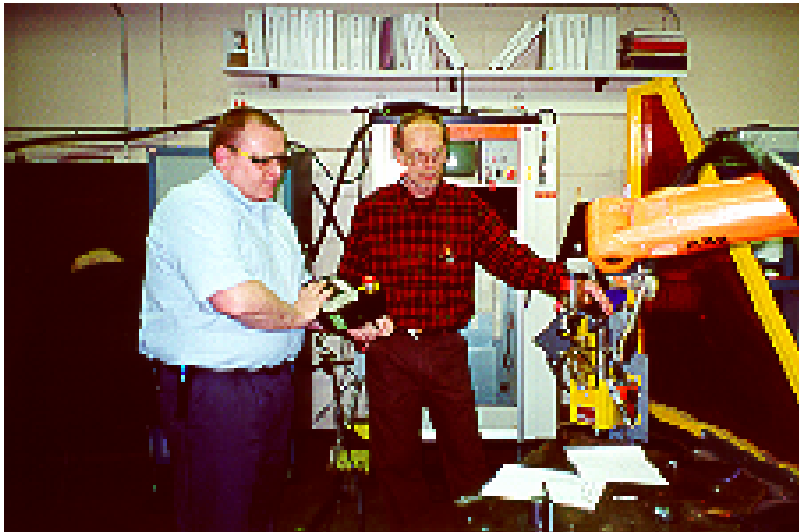
AWS QC19 Standard for AWS Certification of Robotic Arc Welding- Operators and Technicians

- Testing will determine if the candidates meet the D16.4 Performance and Demonstration Requirements
- Performance Test
- Written Closed Book Examination

AWS QC19 Standard for AWS Certification of Robotic Arc Welding- Operators and Technicians

- Performance Test
 - will cover the practical demonstration of knowledge and ability involving a robotic system
 - This performance test is to consist of a series of tasks which will include a GMA welding test plate made to a Welding Procedure Specification (WPS)
 - The performance test must be completed and passed **three months prior to or after** taking the written examination.

Performance Test



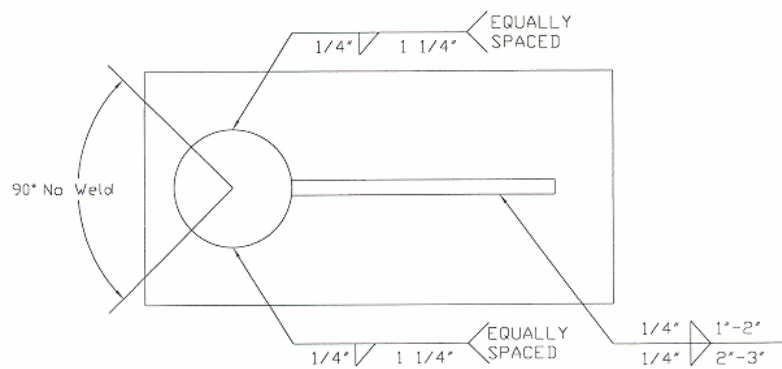
- Test Supervisor must be a CRAW-T
- Test can be administered at work location, School, Robot Mfg. Training Facility etc...
- Test must be done within three months of the closed book examination

Performance Test

- Must be able to identify all of the equipment
- Point out all safety devices and issues
- Do gun, wire feed, and shielding gas maintenance
- Correct for part shifting
- Follow a WPS and Shop Drawing
- Excess number of teach points will deduct from final score
- Test is a timed



Performance Test



- Weld Size
- Weld Location
- Weld Appearance
- WPS must be followed

Performance Test

- Welds are VT'd
- Followed by Macroetching to Determine:
 - Weld Profile
 - Penetration
 - Fusion
- Passing Rate is 75%



Performance Test

- Candidate must locate a CRAW-T to administer the test
 - The AWS will provide a contact list
- Facility must be located
- Test weldment must be procured

Topics Covered In Performance Test

TOPIC	APPROXIMATE %
Identification of components & demonstration of use	
Demonstration of safe use	
Procedure & Welding Process Set-Up	
Cannot lose more than 10 points in above sections	
Robot Programming of Test Piece	20
Welding of test piece	40
Weld Quality Assessment	40
TOTAL	100%

AWS QC19 Standard for AWS Certification of Robotic Arc Welding- Operators and Technicians

- Written Closed Book Examination
 - Applicants for certification as CRAW Operator or Technician shall be required to achieve a pass mark of 75%
 - general knowledge test consisting of approximately one hundred and forty (140) multiple choice questions written examination
 - The written examination is the same for both the operator and technician
 - The technician level certification also allows this person to administer the practical demonstration part of the certification test.

Written Closed Book Examination

- A quiet place must be provided
- A timed two hour exam
- Conducted at major sites along with CWI examination activities
- AWS can make arrangements for special examination sites if warranted



Topics Cover In Written Examination

TOPIC	MINIMUM NUMBER	APPROXIMATE PERCENTAGE
Weld Equipment Setup	10	8
Welding Processes	20	15
Weld Examination	10	8
Definitions and Terminology	10	8
Symbols – Welding & Robotics	5	4
Safety	14	12
Destructive Testing	10	8
Conversion and Calculations	5	4
Robot Programming and Logic	25	20
Welding Procedures	10	8
Kinematic Concepts	5	4
Robot Arc Weld Cell Components-ID	5	4
TOTAL	136 questions	100%

Reference Documents for Written Examination

- AWS A3.0, *Standard Welding Terms and Definitions*
- AWS B1.10, *Guide for Nondestructive Inspection of Welds*
- AWS B1.11, *Guide for Visual Welding Inspection*
- AWS B5.1, *Qualification Standard for AWS Welding Inspectors*
- AWS QC1, *Standard for AWS Certification of Welding Inspectors*
- AWS WI, *Welding Inspection*
- AWS CM-00, *Certification Manual for Welding Inspectors*
- AWS B2.1, *Specification for Welding Procedure and Performance Qualification*
- AWS D8.8, *Specification for Automotive and Light Truck Weld Quality: Arc Welding*
- AWS D16.2, *Standard for Components of Robotic and Automatic Welding,*
- AWS D16.3, *Risk Assessment Guide for Robotic Arc Welding*
- AWS D16.4, *Specification for the Qualification of Robotic Arc Welding Personnel*

Reference Documents for Written Examination

- ANSI Z49.1, *Safety in Welding, Cutting and Allied Processes* (published by the American Welding Society)
- NEMA EW-1, *Electric Arc Welding Power Sources*
- AWS Arc Welding with Robots, Do's and Don'ts
- Automating the Welding Process, Jim Berge, Industrial Press
- AWS Welding Handbook, Volume 1, 9th Edition
- AWS Welding Handbook Volume 2, 8th Edition
- Robot Programming Manual (published by robot manufacturer)
- AWS 058, *Arc Welding Automation*, Howard Cary
- AWS A2.4, *Standard Symbols for Welding Brazing, and Nondestructive Examination*
- Jefferson's Welding Encyclopedia 8th Edition (published by the American Welding Society)
- RIA 15.06, *American National Standard of Industrial Robots and Robot Systems - Safety Systems*

Scoring

- Applicants scoring at or above the 75% pass marks shall be considered certified at such time as all other requirements are met, and fees paid.
- Applicants who fail to meet the minimum scores may apply for re-examination for the part failed not less than thirty (30) days following notification of test results by AWS.
- Applicants may apply to be examined for certification as many times as they may choose; however, no applicant may be examined more than three (3) times per calendar year.
- Applicants must complete and pass both written examinations and the performance test within a three (3) month period.

Current Status Of This New Certification Program

- Beta Test Results
 - Number Tested-23
 - Average Performance Test Scores-91%
 - Average Written Test Scores-80%
- Fees and Application Information
 - Fees for Performance Test
 - Fees for Written Test
 - Total Certification Fees

CLOSING COMMENTS

Questions and Comment