

Disclaimer: The information on this page has not been checked by an independent person. Use this information at your own risk.

ROYMECH

**RGW Welding**  
 Professional Mobile Welding 14  
 Years Welding Experience  
 www.RGWwelding.com

**BS Standards (BSI)**  
 downloaded onto your PC in only a  
 few minutes  
 www.beuth.de

**Welding Fume Extractor**  
 Portable Compact Hepa Filtered  
 Unit Efficient, Effective Fume  
 Control  
 www.sentryair.com

Ads by Google

[Home](#)  
[Drawing Page](#)

Drawing of Weld Symbols

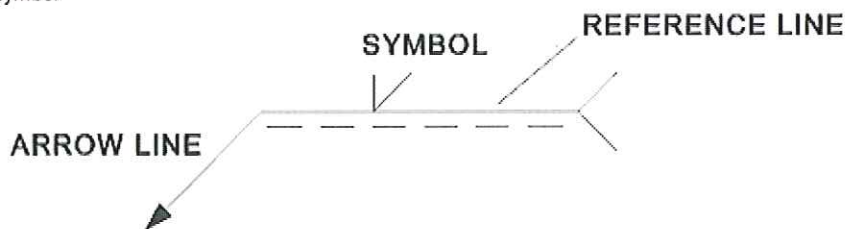
Standards

The British Standard for weld symbols is BS EN 22553. When identification of the weld process is required as part of the weld symbol the relevant weld process code is listed in BS EN ISO 4063.

Basic Weld Symbol

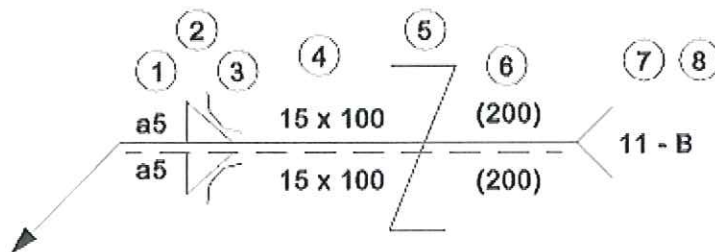
The weld symbol always includes

1. An arrow line
2. A reference line
3. A symbol



Note: Weld symbols on the full reference line relates to welds on the near side of the plate being welded. Weld symbols on the dashed line relates to weld on the far side of the plate. If the welds are symmetrical on both sides of the plate the dashed line is omitted. If the dashed line is above the full line then the symbol for the nearside weld is drawn below the reference line and the symbol for the farside weld is above the dashed line

More Detailed Symbolic Representation of Weld



Information above reference line identifies weld on same side as symbolic representation  
 Information below reference line identifies weld on opposite side to symbolic representation.

- 1) Dimension referring to cross section of weld
- 2) Weld Symbol
- 3) Supplementary symbol
- 4) Number of weld elements x length of weld element
- 5) Symbol for staggered intermittent weld
- 6) Distance between weld elements
- 7) Welding process reference
- 8) Welding class