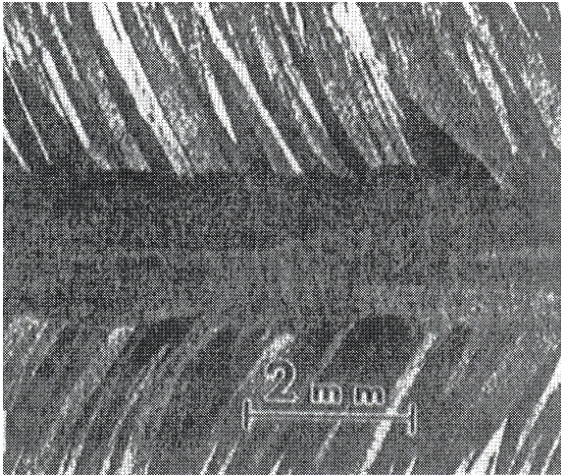


Axial Center Grains in GTA-welded "AA 1100" Aluminum Alloy
Welding Speed: ~ 76 cm/min (~ 30"/min.)
Longitudinal Cross Section
Top View

Source: GANAHA et al
"Metallurgical Transactions" 11A: 1351, 1980



Axial Center Grains in GTA-welded "AA 3003" Aluminum Alloy (1.25%Mn)
Welding Speed: ~ 30 cm/min (~ 11.8"/min.)
Longitudinal Cross Section
Top View

Source: GANAHA et al
"Metallurgical Transactions" 11A: 1351, 1980