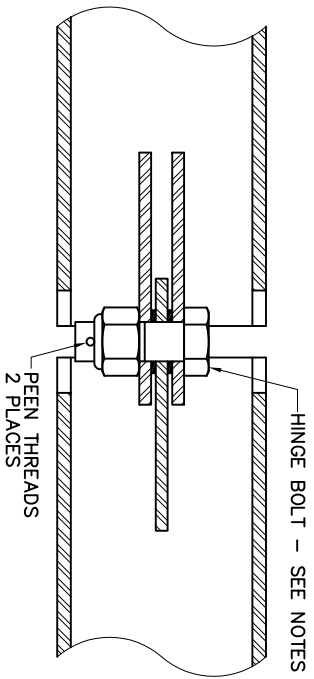
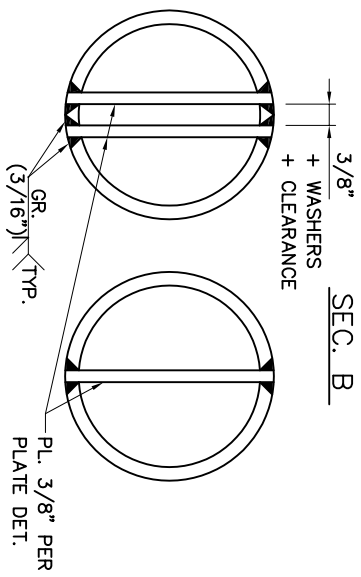


HINGE PLAN DETAIL 1

SEC. A



SEC. B



SEC. C

SEC. D

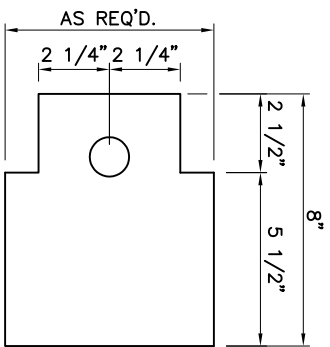


PLATE DETAIL

HINGE DETAIL

SCALE: 3" = 1'-0"

HINGE BOLT NOTES:

CAP SCREW:

- 1 1/4" DIAMETER, 7 THREADS PER INCH x 4" LONG WITH
- 1 1/4" LENGTH OF UNTHREADED SHANK.
- MATERIAL: 18-8 STAINLESS STEEL.

NUT:

- NYLON INSERT LOCK NUT, SIZE TO FIT CAP SCREW.
- MATERIAL: 18-8 STAINLESS STEEL.

WASHERS:

- 2 1/4" OUTSIDE DIAMETER.
- THICKNESS AS REQUIRED TO EXCLUDE SCREW THREADS FROM SHEAR PLANE.
- MATERIAL: 18-8 STAINLESS STEEL.

INSTALLATION:

TRIM LENGTH OF SCREW AS SHOWN.
 TIGHTEN NUT AS REQUIRED TO PERMIT FREE MOVEMENT OF HINGE.
 TO PREVENT REMOVAL OF NUT, PEEN SCREW THREADS JUST ABOVE NUT IN TWO PLACES WITH A 1/4" DIAMETER DRIFT PUNCH DRIVEN TO AT LEAST ONE HALF OF THE THREAD DEPTH.