

Returned for Record - 09/25/2009

**FABRICATION MATERIALS:**

PART NO	COMPONENT DESCRIPTION	N.S. (INCHES)	QTY
<b>PIPE</b>			
1	PIPE ASME-SA335, GRADE P91, SCHEDULE 60	20	74.1'
2	REINFORCED BRANCH (A-395-P10017)	20 X 10	7
3	REINFORCED BRANCH (A-395-P10018)	20 X 6	1
4	REINFORCED BRANCH (A-395-P10019)	20 X 3	1
6	REINFORCED BRANCH (C-395-P10020)	20 X 2-1/2	1
8	PIPE ASME-SA-335, GRADE P91, SCHEDULE 40	10	8.1'
<b>FITTINGS</b>			
9	FLEXOLET, 3000° SOCKET WELD SW3000, ASME-SA-182, GRADE F22, CL3	20 X 1	1
10	FLEXOLET, 3000° SOCKET WELD SW3000, ASME-SA-182, GRADE F22, CL3	20 X 3/4	2
11	ELBOW, 90 DEG., LONG RAD., BUTT WELD ASME-SA-234, GRADE W91, SCHEDULE 60	20	2
12	ELBOW, 45 DEG., LONG RAD., BUTT WELD ASME-SA-234, GRADE W91, SCHEDULE 60	20	1
13	TRAINED ELBOW, 15 DEG., LONG RAD., BUTT WELD ASME-SA-234, GRADE W91, SCHEDULE 60	20	1
14	CAP, BUTT WELD ASME-SA-234, GRADE W91, SCH. 60	20	1
15	ELBOW, 90 DEG., LONG RAD., BUTT WELD ASME-SA-234, GRADE W91, SCHEDULE 40	10	6
16	CAP, BUTT WELD ASME-SA-234, GRADE W91, SCH. 40	10	1
17	FLEXOLET, 3000° SOCKET WELD SW3000, ASME-SA-182, GRADE F22, CL3	10 X 2	1
18	WELD IN THEORELL ASME-SA-182 F91	1.5' 00	7
19	FLANGE LWN 600° ASME-SA-182 F91 (A-395-P10051)	2	2
30	FLANGE LWN 600° ASME-SA-182 F91 (A-395-P10057)	2	1

**ERECTION MATERIALS:**

PART NO	COMPONENT DESCRIPTION	N.S. (INCHES)	QTY
20	FLANGE BLIND 600° ASME-SA-182 F91	2	3
21	GASKET 1/8" THICK API-601 600°	2	3
22	STUD BOLTS 5/8" X 4 1/4" W/RTS AND WASHERS		24

**VALVES:**

23	VALVE, GATE, BUTT WELD, 600° CLASS	20	1
----	------------------------------------	----	---

**WELOS:**

24	FIELD WELD	20	6
26	FIELD WELD	10	6
31	FIELD WELD	2	1

**PIPE SPOOLS:**

(1) (2) (3) (4) (6) (7)			
-------------------------	--	--	--

**PIPE SUPPORT MATERIAL:**

26	PIPE ASME-SA-335, GRADE P22, SCHEDULE 80	8	1.6'
27	PIPE ASME-SA-335, GRADE P22, SCHEDULE 80	8	2.1'
28	PLATE, 3/8" THK, SA-387 GR. 22	8 X 8	1
29	PLATE, 1" THK, SA-387 GR. 22	2 X 4	4

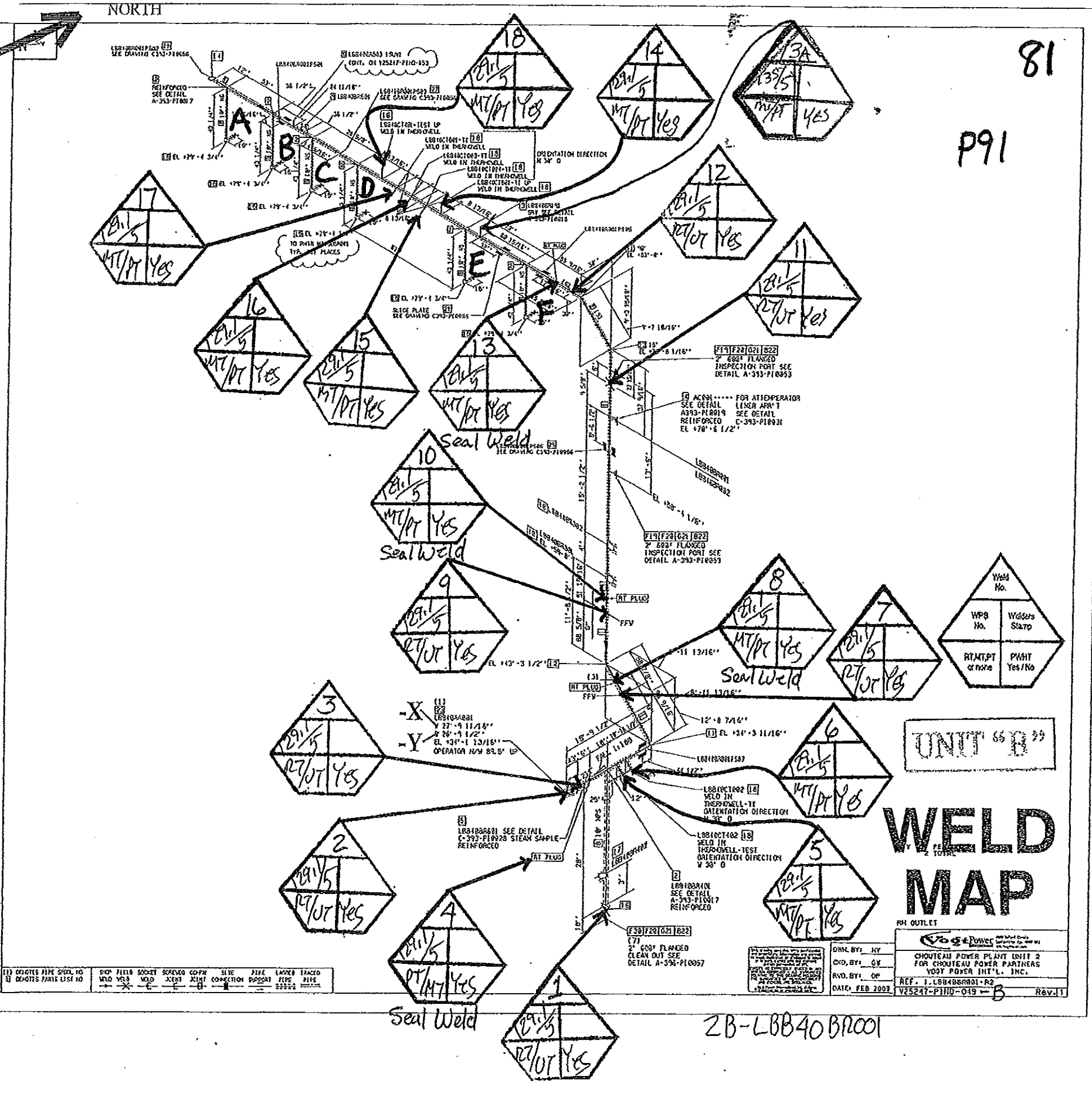
**REVISION RECORD**

NO	DATE	DESCRIPTION	BY	CHK
	FEB 2009	INITIAL ISSUE	NY	GW
	AUG 2009	REVISED PER CUSTOMER REQUEST	NY	GW

**CODE JURISDICTION:**

<input type="checkbox"/>	ASME SECTION I ADMINISTRATIVE AND TECHNICAL
<input type="checkbox"/>	ASME SECTION I ADMINISTRATIVE
<input type="checkbox"/>	ASME SECTION B31.1 TECHNICAL
<input type="checkbox"/>	ASME SECTION B31.1 ADMINISTRATIVE AND TECHNICAL

**MEDIA:**  WATER  STEAM



UNIT 66 B

# WELD MAP

**Weld No.**

WPS No.	Welds Stamp	RT/MT/PT or none	PHWT Yes/No

**PH OUTLET**

DATE: FEB 2009	REV. 1
----------------	--------

ZB-LBB40 BR001