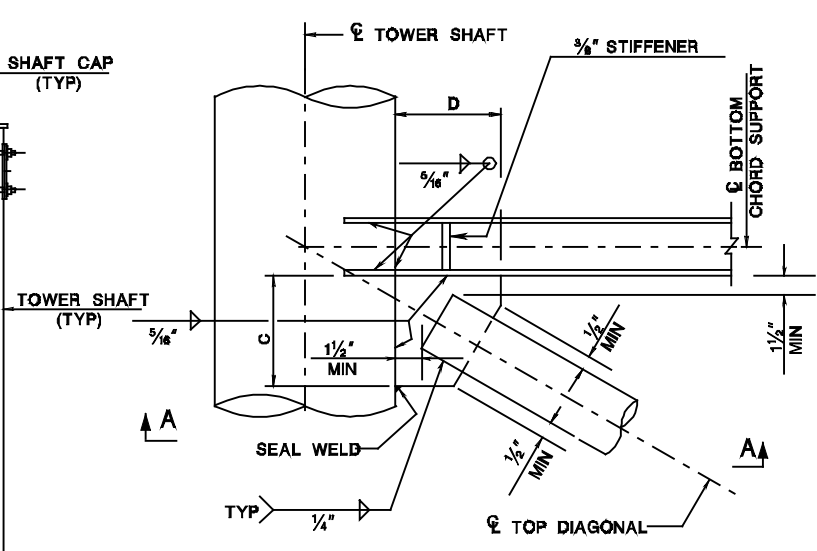
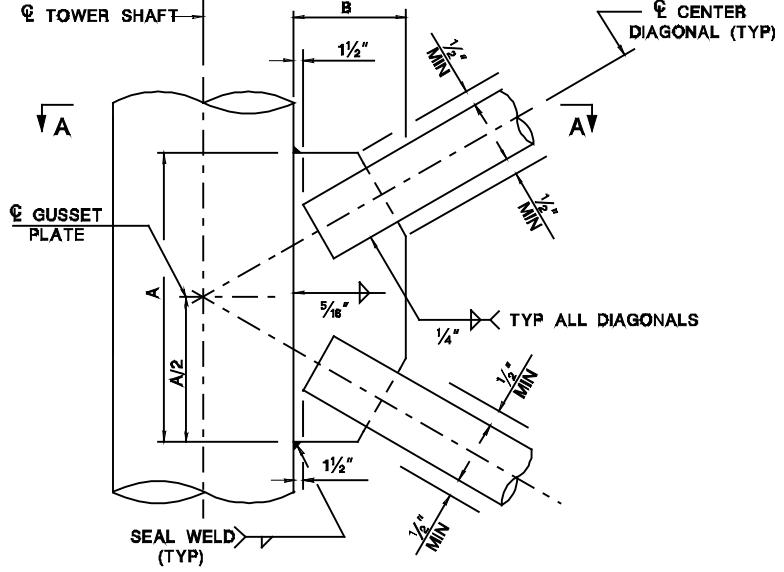


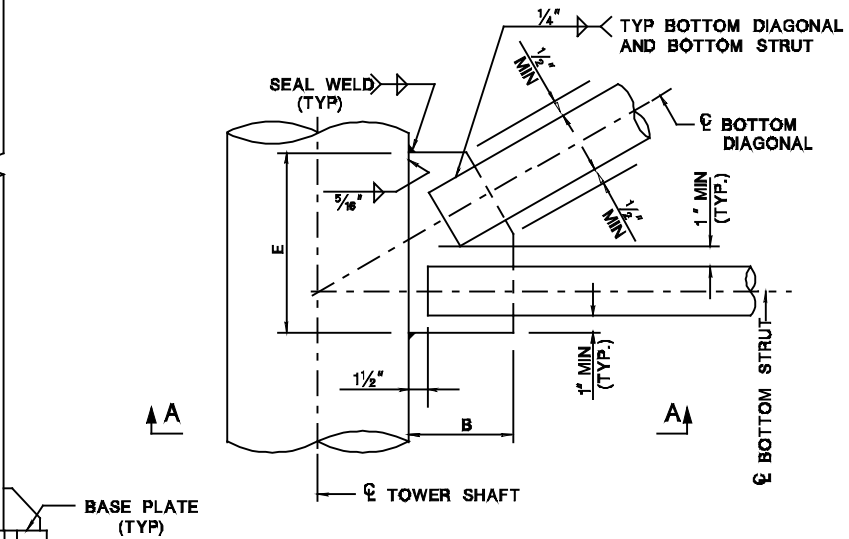
TOWER ELEVATION



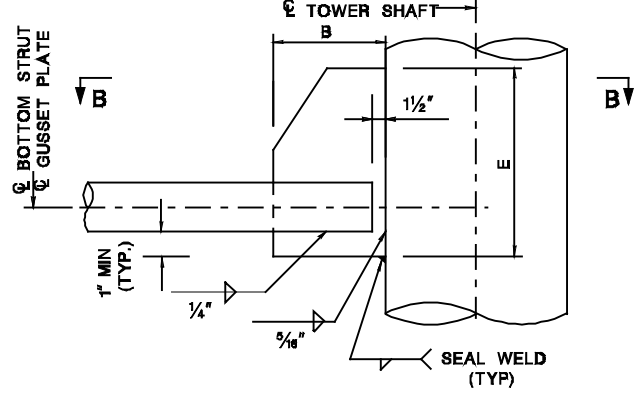
TOP GUSSET DETAIL



CENTER GUSSET DETAIL



BOTTOM GUSSET DETAIL



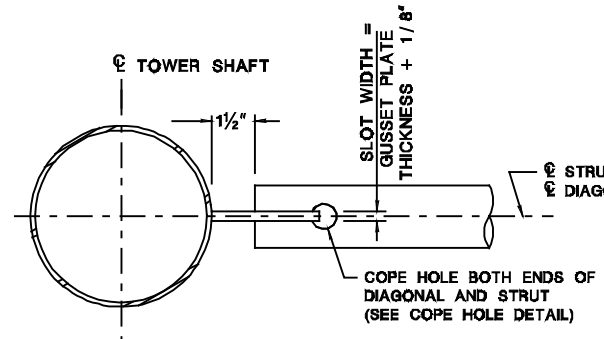
BOTTOM GUSSET DETAIL

7/8" GUSSET PLATES

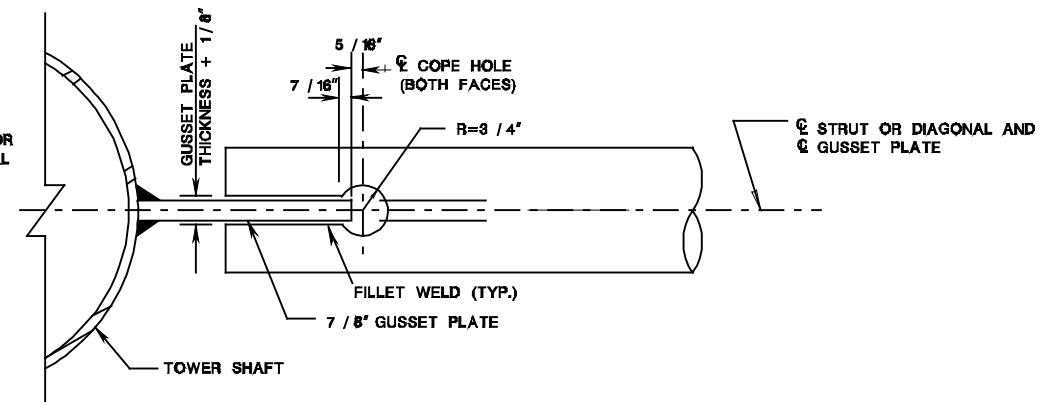
TOWER SHAFT O.D. (IN)	A (FT-IN) MIN.	B (IN) MIN.	C (IN) MIN.	D (IN) MIN.	E (IN) MIN.
10.750	1'-6"	7"	6 1/4"	12 1/4"	13"
12.750	1'-7 1/2"	7 1/4"	7"	12 3/4"	13 3/8"
14.000	1'-11"	9"	8 1/2"	16"	17 1/2"
16.000	2'-1 5/8"	10 1/4"	11 3/8"	16 1/2"	17 1/2"
18.000	2'-4"	11"	11 3/8"	17 3/4"	19"
20.000	2'-5 1/2"	11"	11 3/8"	15 1/2"	19"
24.000	2'-8 1/2"	11"	12 3/8"	15"	19"

NOTES:

- FOR DETAILS OF THE SADDLE BLOCK, SEE SIGN STRUCTURE DRG. OH-D8.
- FOR TOWER SHAFT CAP DETAILS, SEE SIGN STRUCTURE DRG. OH-D8.
- FOR DETAILS OF TOP AND BOTTOM CHORD MOUNTING ASSEMBLIES, SEE SIGN STRUCTURE DRG. OH-D8.
- COPE HOLES SHALL BE PROVIDED ON BOTH ENDS AND BOTH FACES OF ALL TUBULAR DIAGONALS AND BRACING MEMBERS.



SECTION A-A
(SECTION B-B OPPOSITE HAND)



COPE HOLE DETAIL

SIGN STRUCTURE DRG. OH-D7
NEW JERSEY DEPARTMENT OF TRANSPORTATION
BUREAU OF STRUCTURAL ENGINEERING

OVERHEAD SIGN SUPPORT STRUCTURES
STEEL TOWER DETAILS

ROUTE: SECTION

SCALE : NONE
BRIDGE SHEET NO. OF