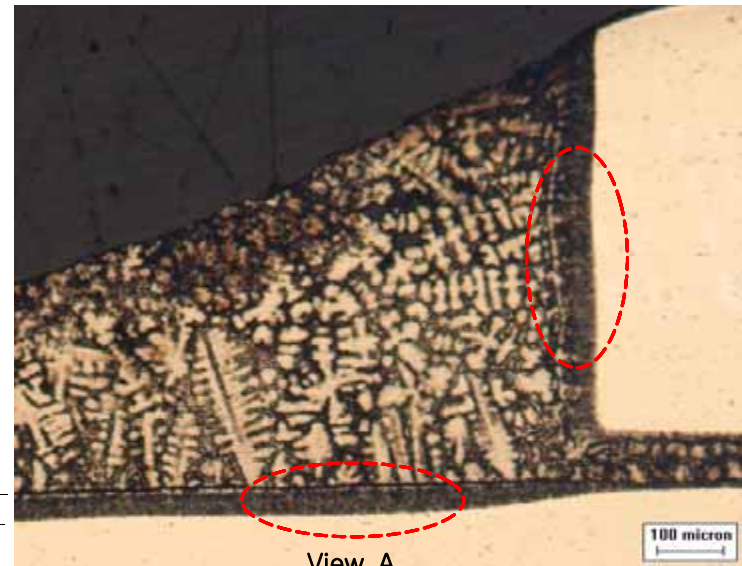
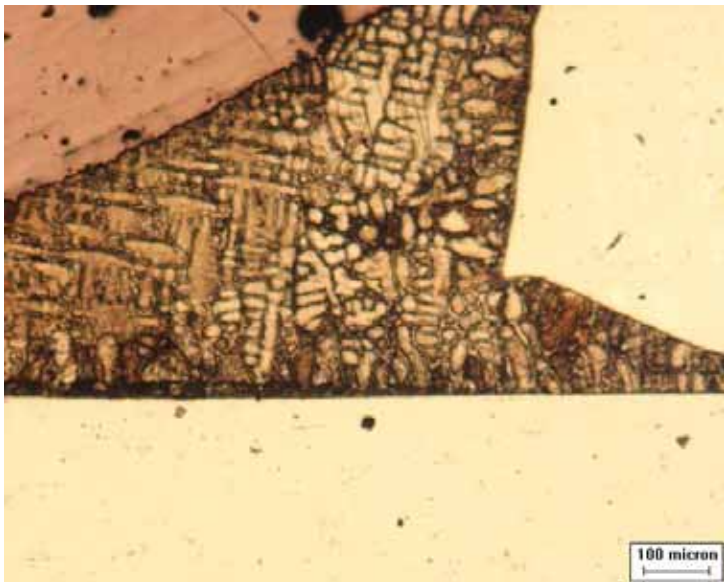


Lab Joint

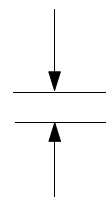
- BASE Metal AMS5596 (Inco 718)
- Braze filler : AMS4764
- Brazed at 1800°F±25 for 1 min
in max 0.5 micron vacuum furnace
- Etchant by Kalling's

PREVIOUS COUPON TEST

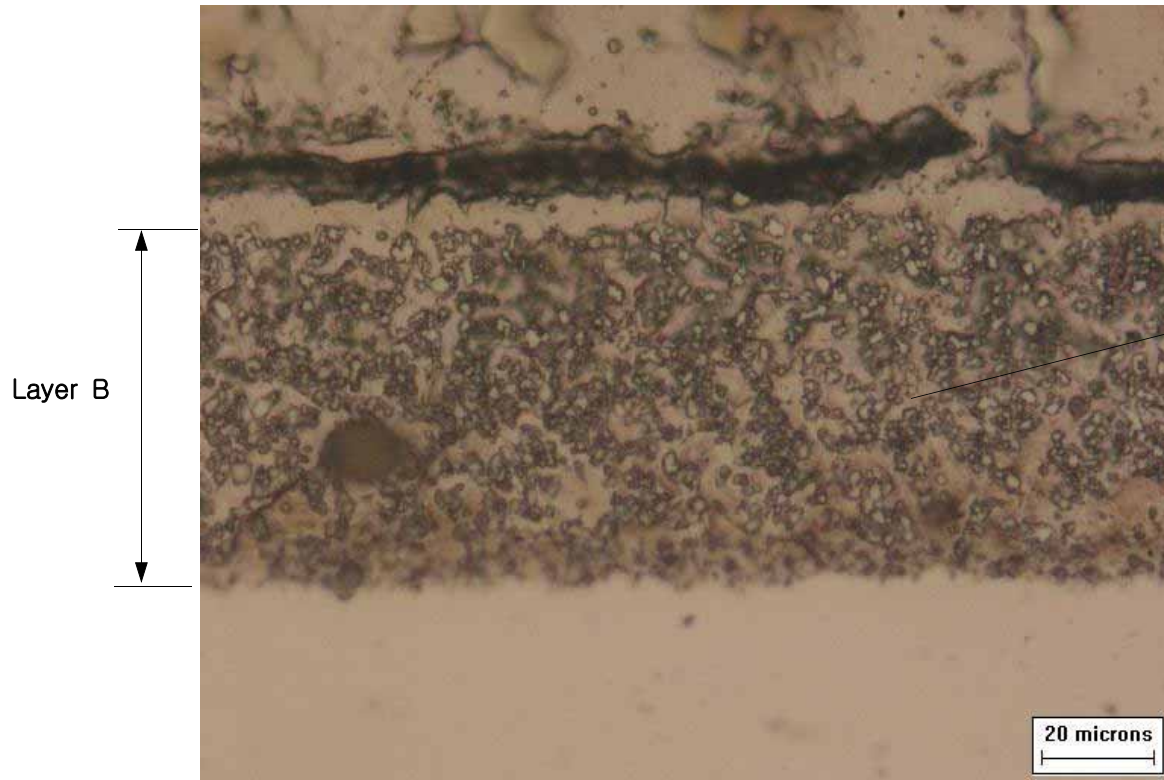
CURRENT COUPON TEST



Layer B



View A



This phenomenon took place at the fillet area (Excess brazed area) only for corrent test coupon.

And, it is found small quantity at the brazed area which have small gap for previous and current coupons.

Enlarged View A