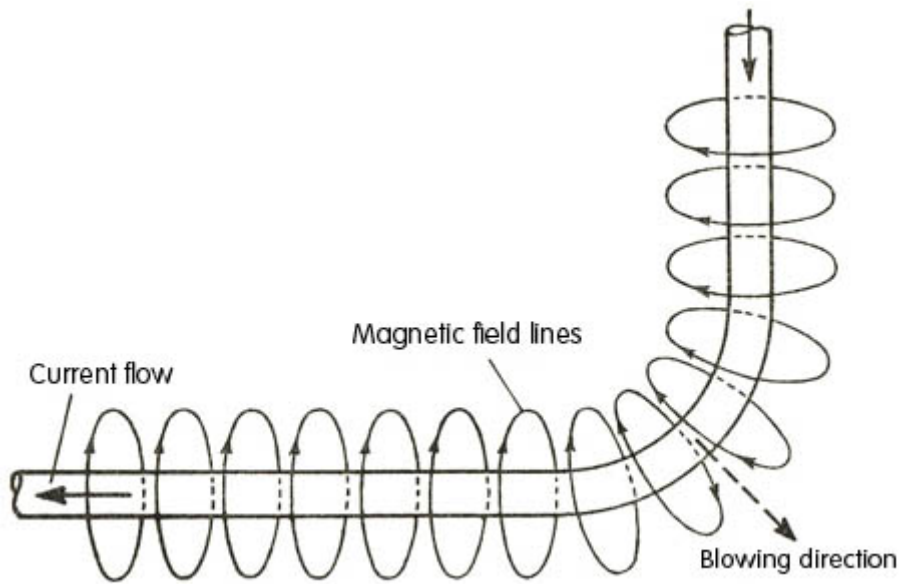
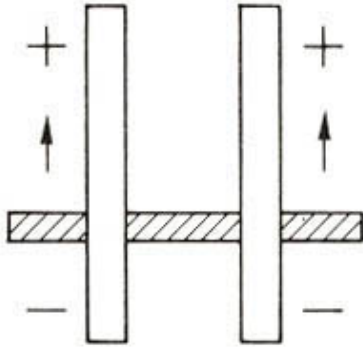


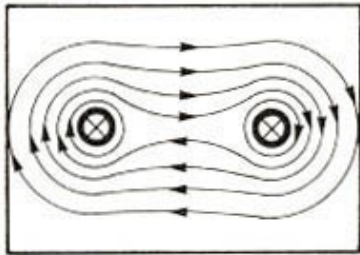
Arc_Blow_1*



Arc_Blow_2*

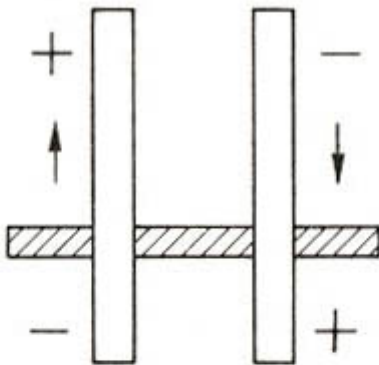


Identical Current Flow Directions
Conductors attract each other

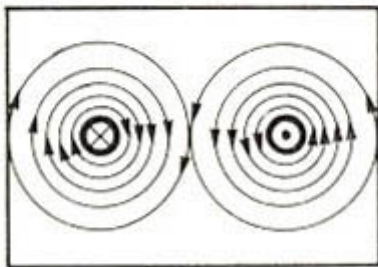


Source: Hase/Reitze
Lehrbuch des Lichtbogenschweißens
GIRARDET 1981

Arc_Blow_3_a*

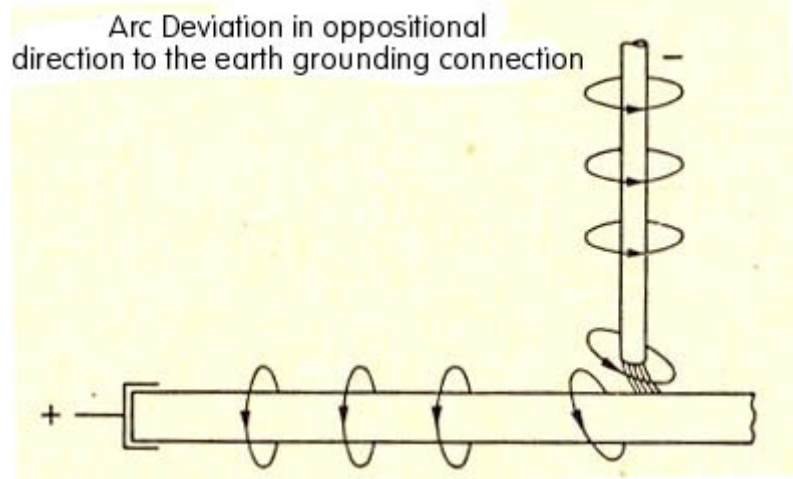


Different Current Flow Direction
Conductors repel each other

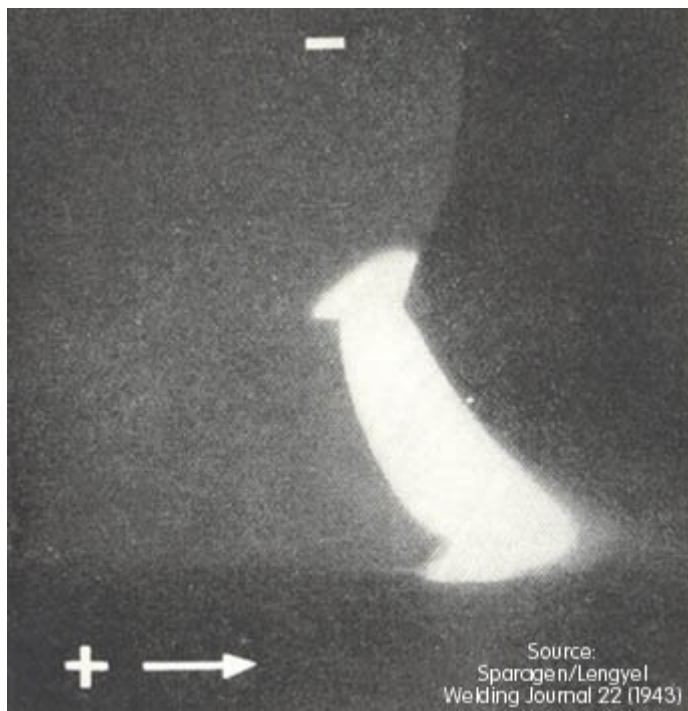


Source: Hase/Reitze
Lehrbuch des Lichtbogenschweißens
GIRARDET 1981

Arc_Blow_3_b*

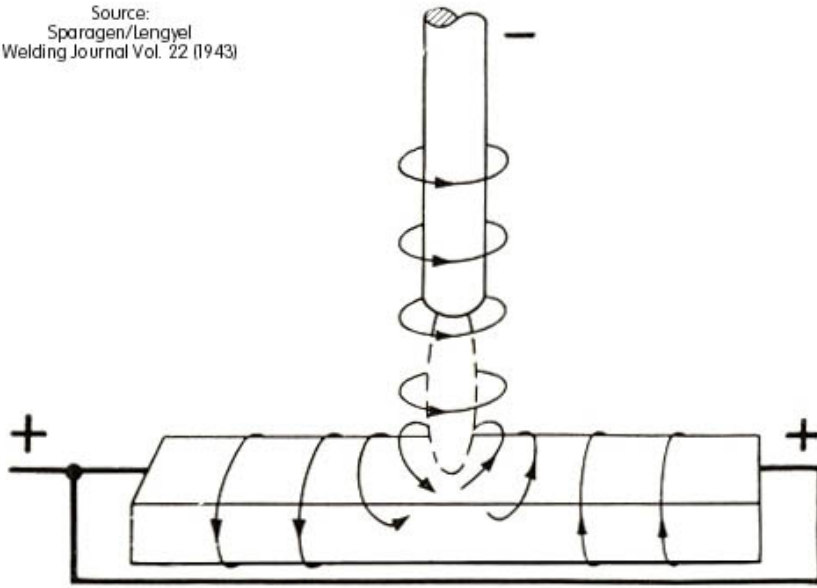


Arc_Blow_4*



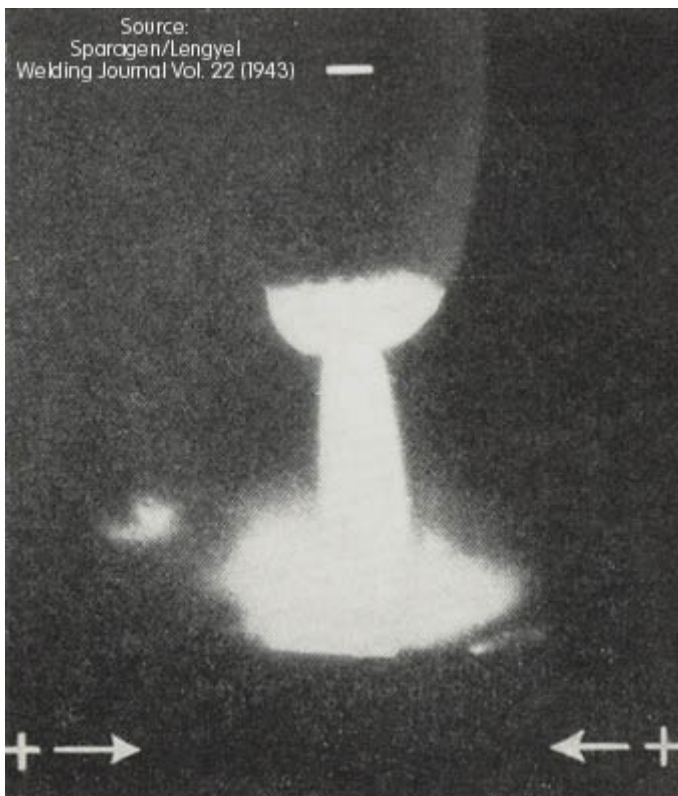
Arc_Blow_5*

Source:
Sparagen/Lengyel
Welding Journal Vol. 22 (1943)



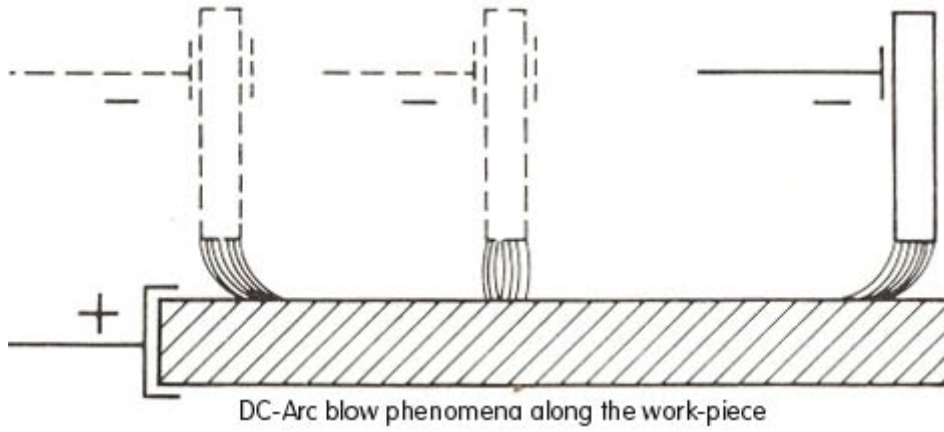
Symmetric Ground Clamp positioning
for achieving symmetric magnetic field
formation

Arc_Blow_6_a*



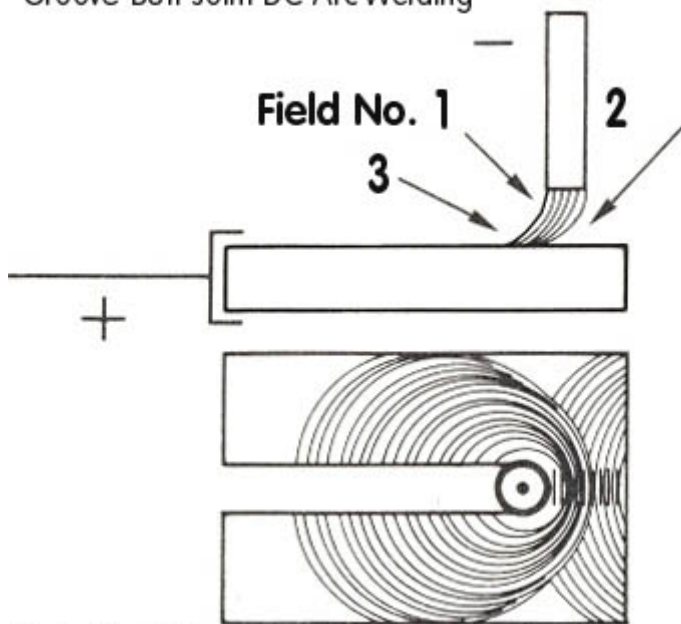
Arc_Blow_6_b*

Source: Hase/Reitze - Lehrbuch des Lichtbogenschweißens GIRARDET 1981

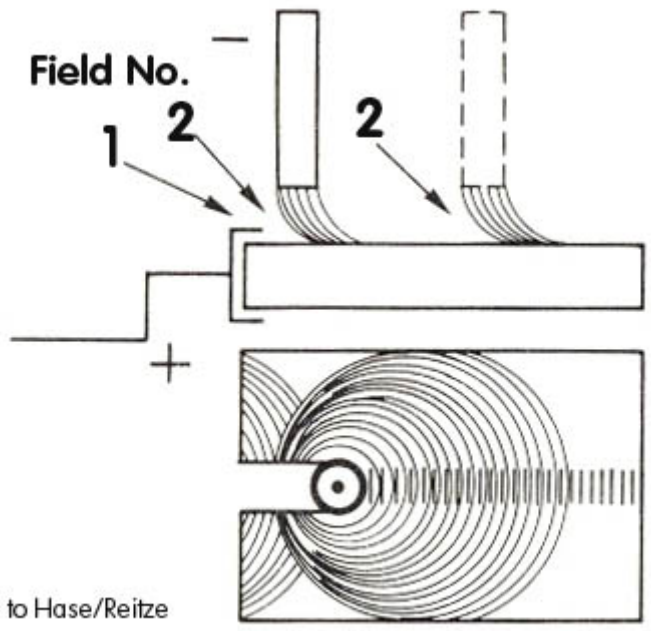


Arc_Blow_7*

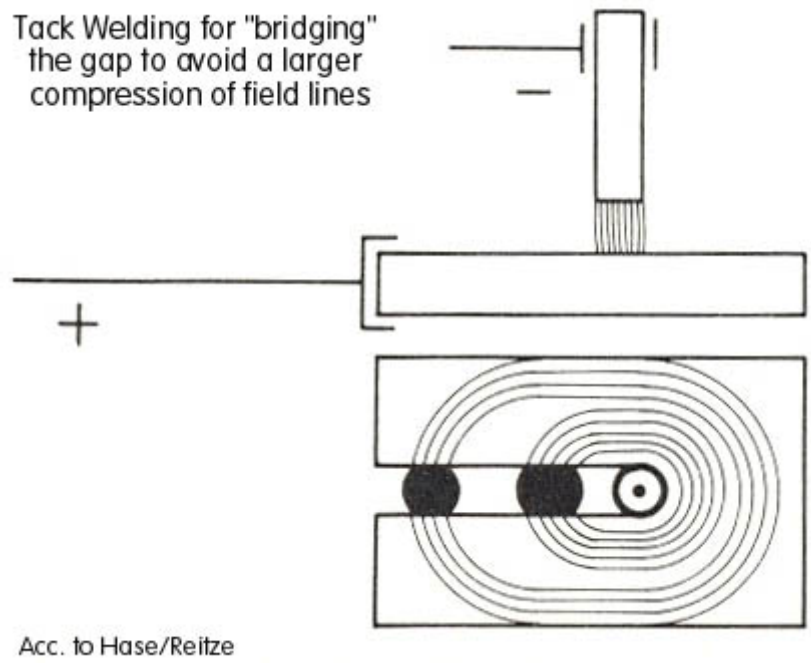
Different field phenomena in
Groove-Butt-Joint DC-Arc Welding



Arc_Blow_8_a*



Arc_Blow_8_b*



Arc_Blow_9*

(*) See the text for explanations